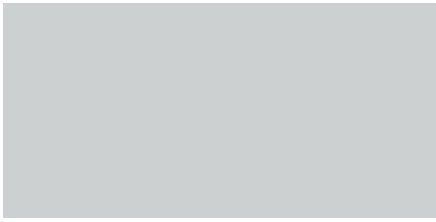


Outdoor finishes

Finiture metallo

Metal finish / Metallausführungen / Acabados metal / Finitions métal



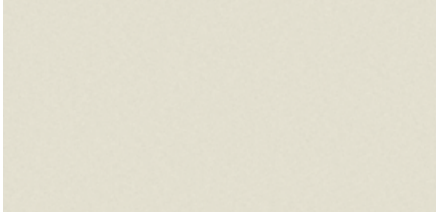
Alluminio anodizzato / Anodised aluminium / Eloxiertes Aluminium / Aluminio anodizado / Aluminium anodisé



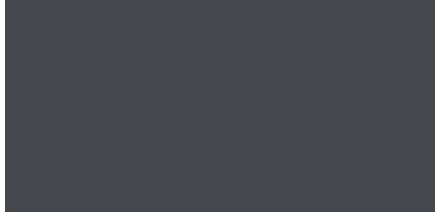
RAL 9006 Verniciato alluminio / Painted aluminium / Aluminiumfarben lackiert / Pintado aluminio / Peint aluminium



Verniciato bianco / Painted white / Weiss lackiert / Pintado blanco / Peint blanc



Verniciato grigio sabbia / Painted sand grey / Sandgrau lackiert / Pintado gris arena / Peint gris sable



Verniciato grigio antracite / Painted anthracite grey / Grau anthrazit lackiert / Pintado gris antracita / Peint gris anthracite



Verniciato nero / Painted black / Schwarz lackiert / Pintado negro / Peint noir



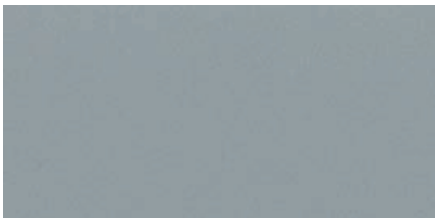
Verniciato rosso corallo / Painted red coral / Rot Koralle lackiert / Pintado coral rojo / Peint corail rouge

Laminato

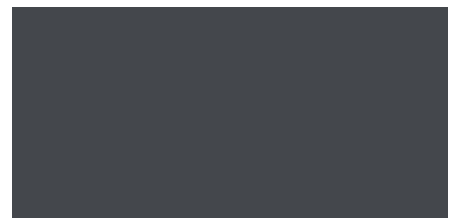
Laminate / Lamine / Laminados / Stratifiés



Bianco / White / Weiß / Blanco / Blanc



Grigio / Grey / Grau / Gris / Gris



Grigio antracite / Anthracite grey / Grau anthrazit / Gris antracita / Gris anthracite



Nero / Black / Schwarz / Negro / Noir

Laminato Alucompact®

Alucompact® laminate / Laminate Alucompact® / Laminados Alucompact® / Stratifiés Alucompact®

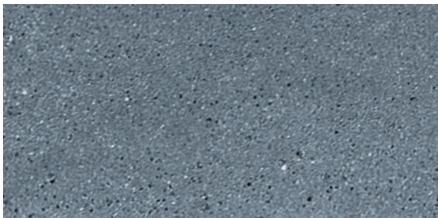
finishes

**Bianco** / White / Weiß / Blanco / Blanc**Grigio** / Grey / Grau / Gris / Gris**Grigio antracite** / Anthracite grey / Grau anthrazit / Gris antracita / Gris anthracite**Laminato Pure-white**

Pure-white laminate / Laminate Pure-white / Laminados Pure-white / Stratifiés Pure-white

**Bianco** / White / Weiß / Blanco / Blanc**Finiture tavolo “Boiaccia”**

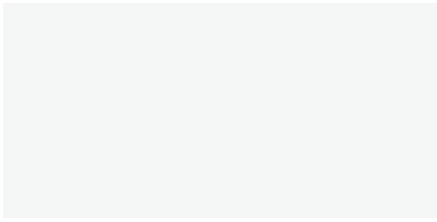
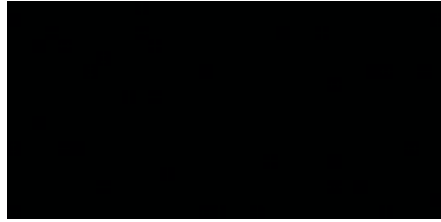
Finishes for the “Boiaccia” table / Ausführungen Tisch “Boiaccia” / Acabados mesa “Boiaccia” / Finitions table “Boiaccia”

**Cemento grigio** / Grey cement / Grauer Zement / Cemento gris / Béton gris

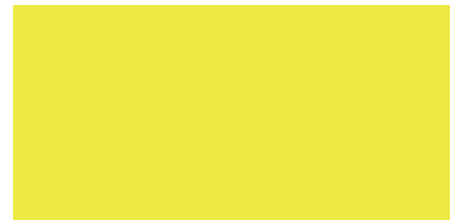
IT Nel tavolo Boiaccia, le lievi imperfezioni formali del cemento, la sua superficie porosa e gli angoli non perfettamente squadri, contribuiscono a infondergli una matericità che dura ed al tempo stesso cambia nel tempo. Ogni tavolo è unico, oltre che per il numero segnato sotto il piano che lo contraddistingue, anche per le leggere variazioni di colore che si verificano, al momento della colata, a causa dell'umidità e della temperatura dell'aria. / **EN** The Boiaccia table has slight formal imperfections in its cement, a porous surface and corners that are not perfectly square, all contributing to its material quality, which is longlasting yet changes over time. Each table is unique, not only with a number marked under the top but also with slight variations in colour, which arise at the time of casting due to humidity and air temperature. / **DE** Beim Tisch Boiaccia tragen die leichten formalen Imperfektionen des Zements, seine poröse Oberfläche und die nicht perfekt quadratischen Kanten dazu bei, ihm eine Kompaktheit zu verleihen, die der Zeit standhält und sich dennoch mit ihr verwandelt. Jeder Tisch ist einzigartig, und zwar nicht nur wegen der unter der Platte angeführten kennzeichnenden Seriennummer, sondern auf wegen der leichten Farbvarianten, die aufgrund der Feuchtigkeit und der Temperatur der Luft beim Gießen des Zements entstehen. / **ES** En la mesa Boiaccia, las leves imperfecciones formales del cemento, su superficie porosa y las esquinas imperfectamente escuadradas contribuyen a infundirle una materialidad que dura y al mismo tiempo cambia a lo largo del tiempo. Cada mesa es única, tanto por el número distintivo que lleva marcado debajo del sobre, como por las ligeras variaciones de color que se producen en el momento de la lechada a causa de la humedad y de la temperatura del aire. / **FR** Sur la table Boiaccia, les légères irrégularités du béton, la surface poreuse et les angles qui ne sont pas parfaitement à l'équerre, contribuent à lui conférer un aspect matiérique qui, à la fois, dure et change au fil du temps. Chaque table est une pièce unique, non seulement à cause du numéro marqué sous son plateau, mais également grâce aux légères nuances de couleur, dues aux variations d'humidité et de température de l'air, qui surviennent lors de la coulée du béton.

Finiture poliuretano

Polyurethane finish / Ausführung Polyurethan / Acabados poliuretano / Finitions polyuréthane

**PO1 Bianco** / White / Weiß / Blanco / Blanc**PO3 Nero** / Black / Schwarz / Negro / Noir**PO4 Beige** / Beige / Beige / Beige / Beige**PO6 Terracotta** / Terracotta / Tonerde / Terracota / Terre cuite**PO7 Marrone** / Brown / Braun / Marrón / Marron**PO8 Verde oliva** / Olive-green / Olivengruen / Verde oliva / Olive vert**PO9 Celeste** / Light blue / Himmelblau / Celeste / Bleu ciel**Finiture PBT sgabello "BCN"**

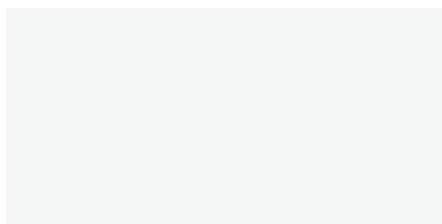
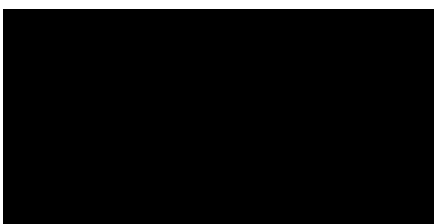
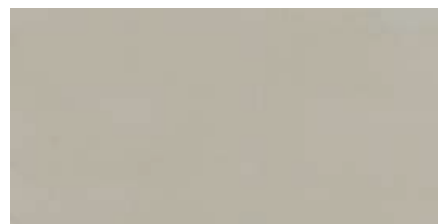
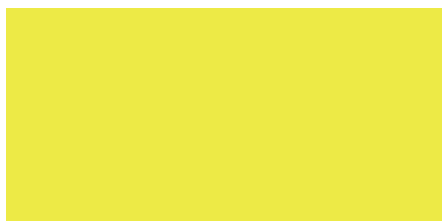
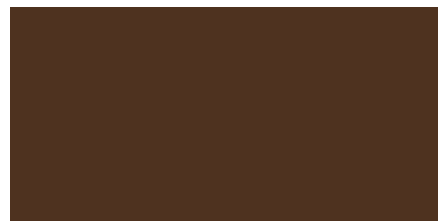
PBT finishes for "BCN" stool / Ausführungen PBT Hocker "BCN" / Acabados PBT taburete "BCN" / Finitions PBT tabouret "BCN"

**PP1 Bianco** / White / Weiß / Blanco / Blanc**PP3 Nero** / Black / Schwarz / Negro / Noir**PP6 Verde fluo** / Fluo green / Fluo gruen / Verde fluorescente / Vert fluo**PP7 Rosso corallo** / Red coral / Rot Koralle / Coral rojo / Corail rouge

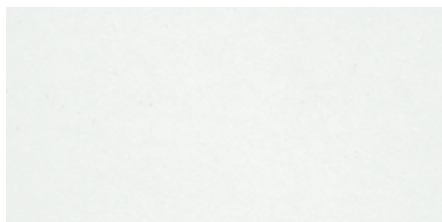
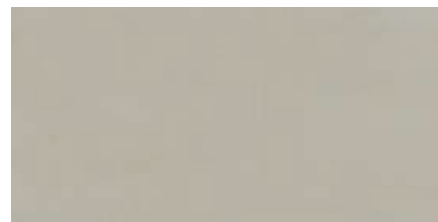
Finiture polipropilene

Polypropylene finishes / Ausführung Polypropylen / Acabados polipropileno / Finitions polypropylène

finishes

**PP1 Bianco** / White / Weiß / Blanco / Blanc**PP3 Nero** / Black / Schwarz / Negro / Noir**PP5 Beige** / Beige / Beige / Beige / Beige**PP6 Verde fluo** / Fluo green / Fluo gruen / Verde fluorescente / Vert fluo**PP7 Rosso corallo** / Red coral / Rot Koralle / Coral rojo / Corail rouge**PP8 Marrone** / Brown / Braun / Marrón / Marron**Finiture PA6 sedia "Compas"**

PA6 finishes for "Compas" chair / Ausführungen PA6 Stuhl "Compas" / Acabados PA6 silla "Compas" / Finitions PA6 chaise "Compas"

**PP1 Bianco** / White / Weiß / Blanco / Blanc**PP3 Nero** / Black / Schwarz / Negro / Noir**PP5 Beige** / Beige / Beige / Beige / Beige**PP9 Grigio acqua** / Watery Grey / Wassergrau / Gris agua / Gris acqua

Finiture corde “Rest collection”

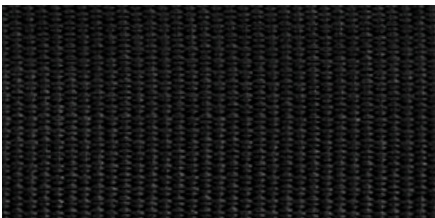
Rope finishes for the “Rest” / Ausführungen der Riemen “Rest” / Acabados cuerdas “Rest” / Finitions des cordes “Rest”

**RST1 Beige** / Beige / Beige / Beige / Beige**RST2 Marrone** / Brown / Braun / Marrón / Marron**RST3 Grigio antracite** / Anthracite grey / Grau anthrazit / Gris antracita / Gris anthracite**RST4 Nero** / Black / Schwarz / Negro / Noir

100% polyester

Finiture cinghie “Rest collection”

Strap finishes for the “Rest” / Ausführungen der Gurte “Rest” / Acabados correas “Rest” / Finitions des courroies “Rest”

**RST1 Beige** / Beige / Beige / Beige / Beige**RST2 Marrone** / Brown / Braun / Marrón / Marron**RST3 Grigio antracite** / Anthracite grey / Grau anthrazit / Gris antracita / Gris anthracite**RST4 Nero** / Black / Schwarz / Negro / Noir

100% polyester