


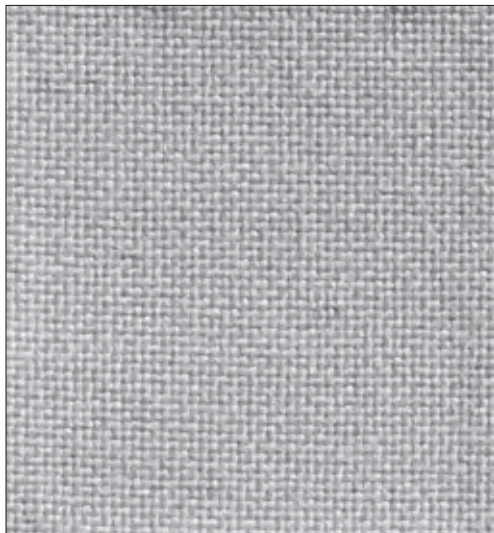
# RIVEST IMENTI

2019

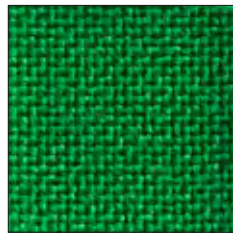
TEXTILES AND LEATHERS

# CATEGORIA 1 **MADRID**

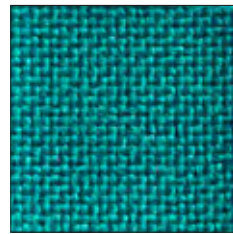
ignifugo classe 1IM  
fire proof class 1IM 



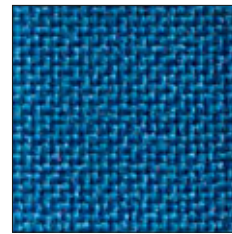
MD 515



MD 506



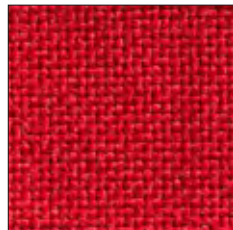
MD 509



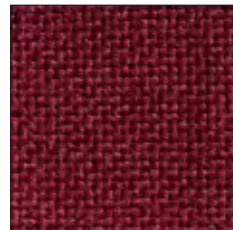
MD 529



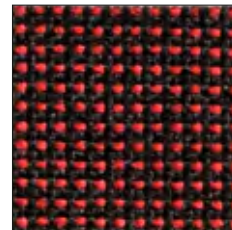
MD 510



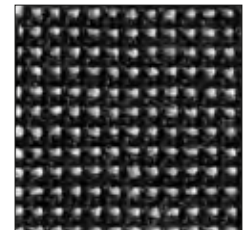
MD 502



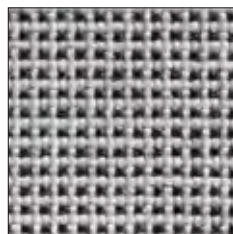
MD 530



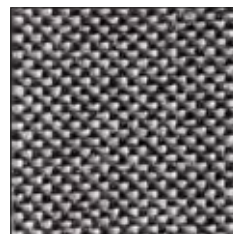
MD 520



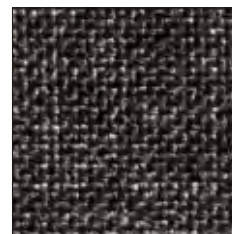
MD 518



MD 522



MD 519



MD 514



MD 511

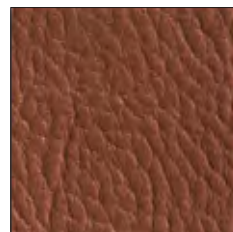
# CATEGORIA 1 **COVE**



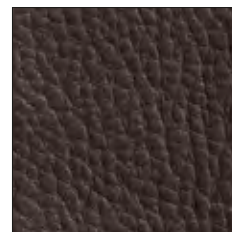
C 1



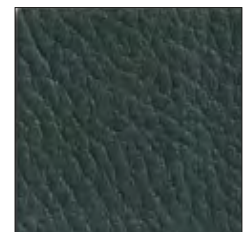
C 21



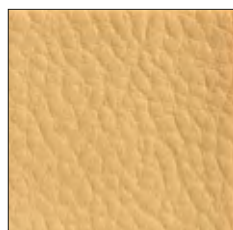
C 301



C 336



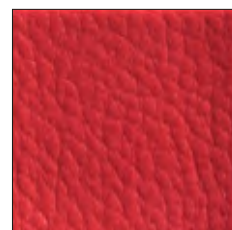
C 196



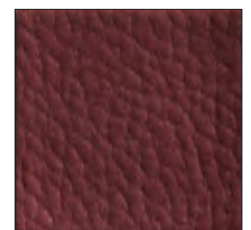
C 238



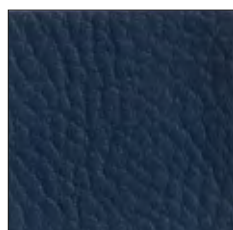
C 371



C 441



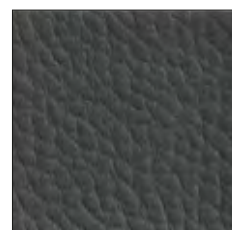
C 413



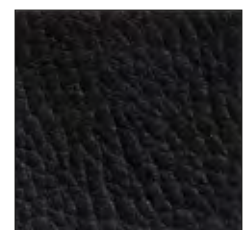
C 539



C 84




C 98



C 560

# CATEGORIA 2 **ANGEL**

ignifugo classe 1IM  
fire proof class 1IM 



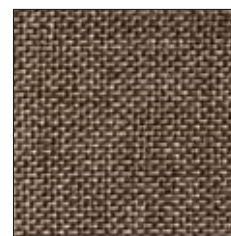
AN 38



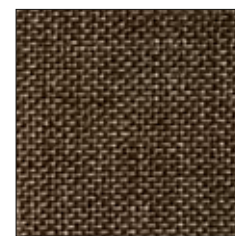
AN 30



AN 35



AN 45



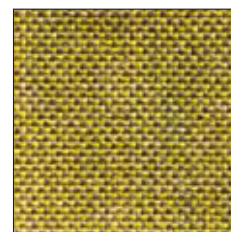
AN 20



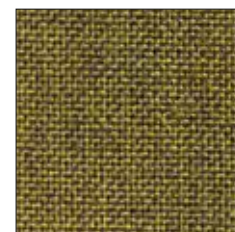
AN 53



AN 50



AN 41



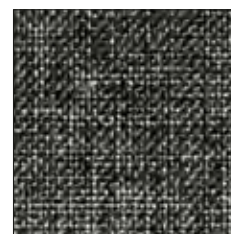
AN 09



AN 55



AN 39




AN 56



AN 57

# CATEGORIA 2 **KING-L**



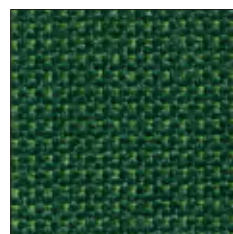
ignifugo classe 1IM  
fire proof class 1IM 



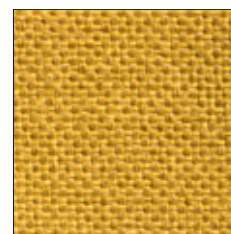
KL 8508



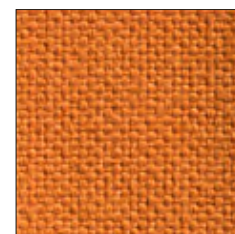
KL 7041



KL 7936



KL 3520



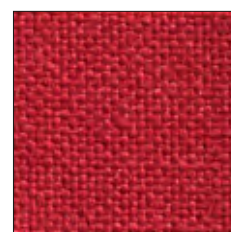
KL 4030



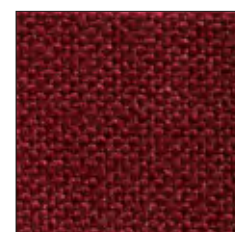
KL 1030



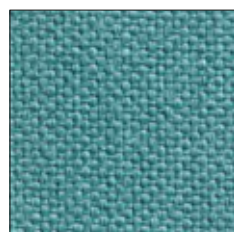
KL 8014



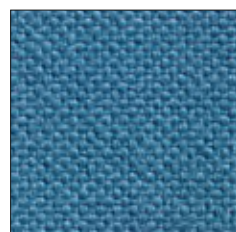
KL 4027



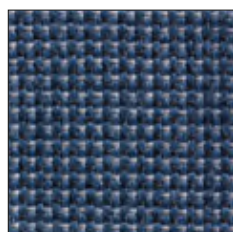
KL 4017



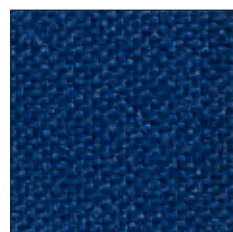
KL 7026



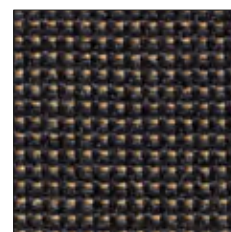
KL 6043



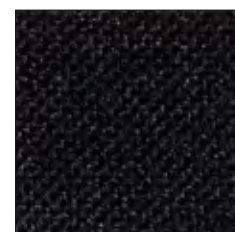
KL 6517



KL 6080




KL 8511



KL 8033

# CATEGORIA 2 **GAZEBO**

ignifugo classe 1IM   
fire proof class 1IM



S 4979



S 6



S 151



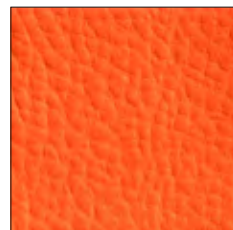
S 1194



S 1307



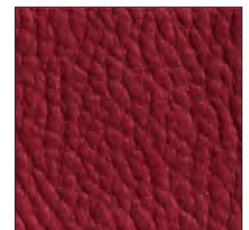
S 71



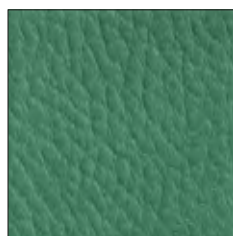
S 792



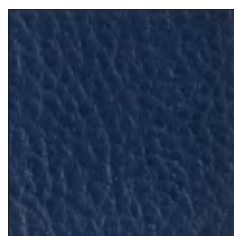
S 680



S 726



S 1809



S 4947



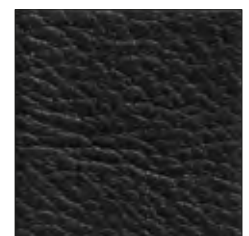
S 6985



S 4009




S 1955



S 991

# CATEGORIA 2 **KING-FLEX**



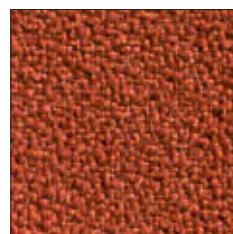
ignifugo classe 1IM   
fire proof class 1IM



KF 1006



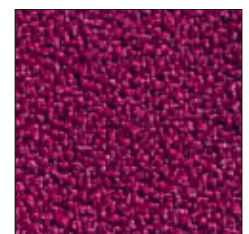
KF 4030



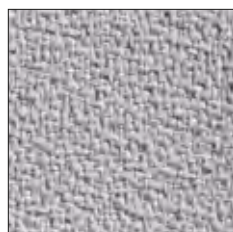
KF 4066



KF 4008



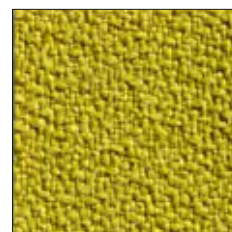
KF 4020



KF 8027



KF 3083



KF 3030



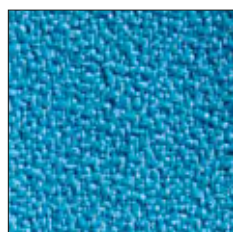
KF 7013



KF 6026



KF 7023



KF 6007



KF 8009




KF 9228



KF 8033

# CATEGORIA 3 **SECRET**

ignifugo classe 1IM  
fire proof class 1IM 



SC 1013



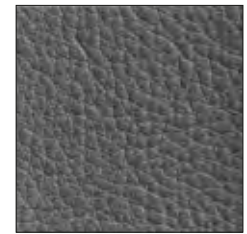
SC 1002



SC 1008



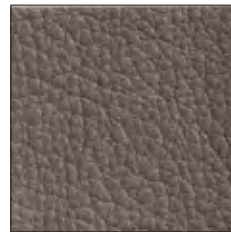
SC 1011



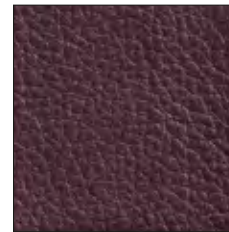
SC 1024



SC 1007



SC 1005



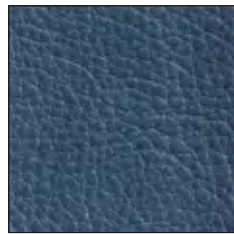
SC 1020



SC 1009



SC 1018



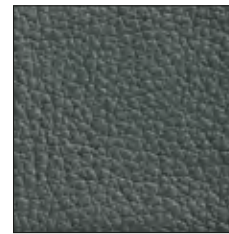
SC 1021



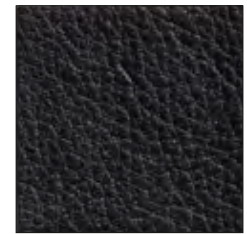
SC 1006



SC 1015




SC 1012



SC 1017

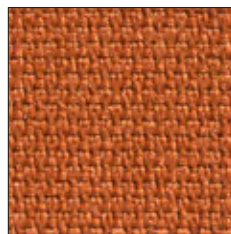
# CATEGORIA 3 **MINI**



ignifugo classe 1IM  
fire proof class 1IM 



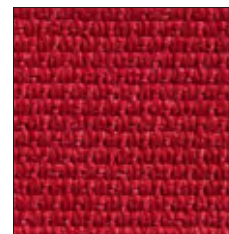
MN 6524



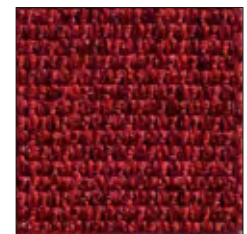
MN 4030



MN 4530



MN 4028



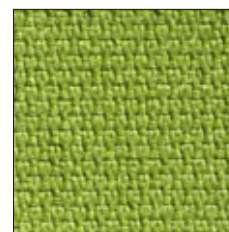
MN 4528



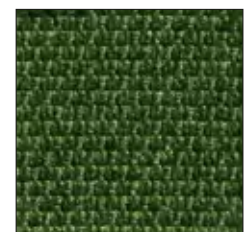
MN 3008



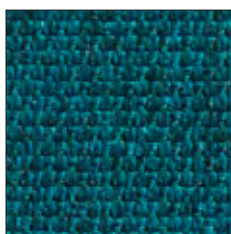
MN 1020



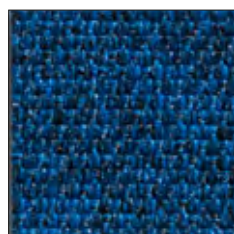
MN 7022



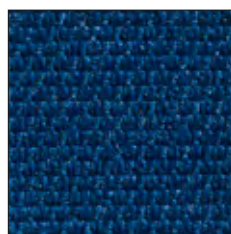
MN 7509



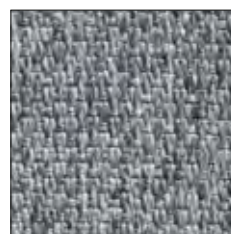
MN 6502



MN 6504



MN 6015



MN 1510




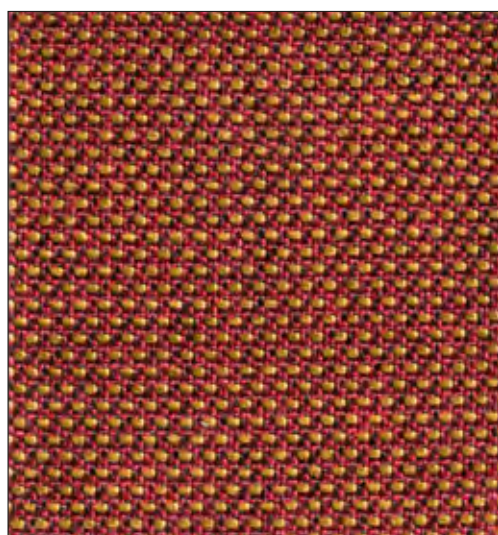
MN 1520



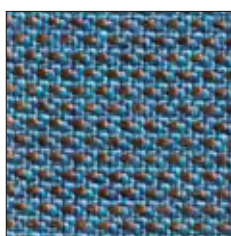
MN 8033

# CATEGORIA 3 **ANGEL TRIK**

ignifugo classe 1IM  
fire proof class 1IM 



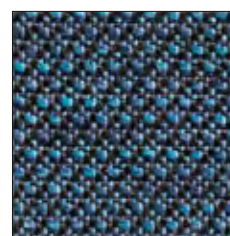
AK 301



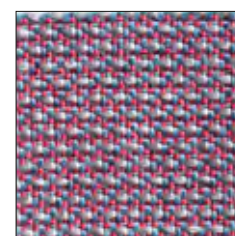
AK 704



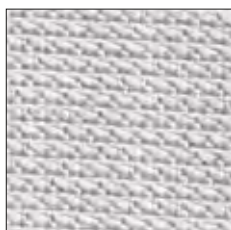
AK 701



AK 702



AK 703



AK 101



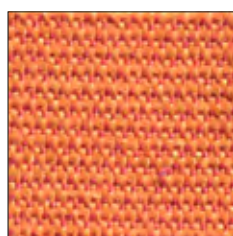
AK 402



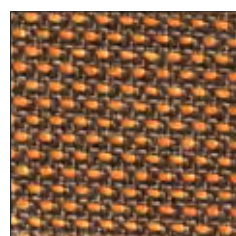
AK 400



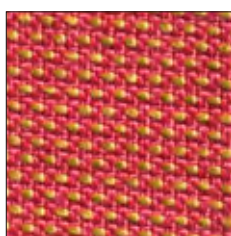
AK 803



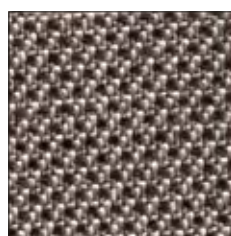
AK 307



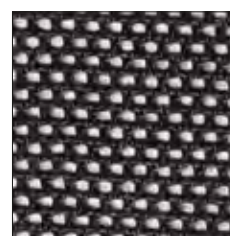
AK 302



AK 304



AK 602




AK 221



AK 405

# CATEGORIA 5 **PELLE/LEATHER**

pelle vera  
genuine leather 



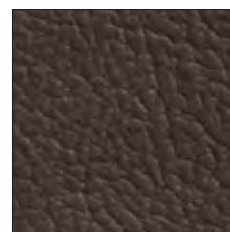
P 1



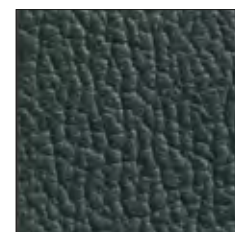
P 21



P 301



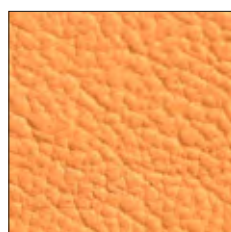
P 336



P 196



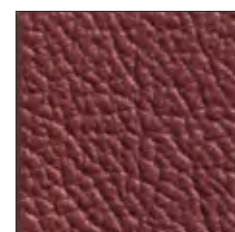
P 238



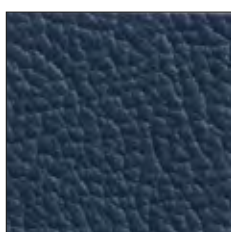
P 371



P 441



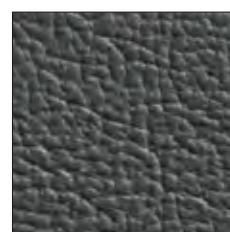
P 413



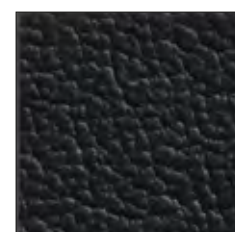
P 539



P 84



P 98



P 560

## CATEGORIA 1

### MADRID

± 230 g/mq  
100% PP polipropilene F.R.  
100% PP Polypropylene F.R.  
80.000 cicli martindale  
80.000 martindale cycles  
ignifugo classe 11M  
fire proof class 11M

## CATEGORIA 2

### ANGEL

± 228 g/mq  
100% polipropilene F.R.  
100% polypropylene F.R.  
100.000 cicli martindale  
100.000 martindale cycles  
ignifugo classe 11M / fire proof class 11M  
idrorepellente, antistatico, anallergico,  
antibatterico, irrestingibile / water repellent,  
antistatic, hypoallergenic, antibacterial, no-shrink

### GAZEBO

± 640 g/mq  
87,5% Polivinilcloruro plastificato -12,5% Cotone  
87,5% Plasticized polyvinylchloride -12,5% Cotton  
50.000 cicli martindale / 50.000 martindale cycles  
ignifugo classe 11M / fire proof class 11M

### COVE

± 565 g/mq  
82% PVC - 7% Cotone  
11% Poliestere  
82% PVC - 7% Cotton  
11% Polyester  
50.000 cicli martindale  
50.000 martindale cycles

### KING-L

± 260 g/mq  
100% poliestere Trevira CS  
100% Polyester Trevira CS  
70.000 cicli martindale  
70.000 martindale cycles  
ignifugo classe 11M  
fire proof class 11M

### KING-FLEX

± 300 g/mq  
100% poliestere Trevira CS  
100% Polyester Trevira CS  
100.000 cicli martindale  
100.000 martindale cycles  
ignifugo classe 11M  
fire proof class 11M

## CATEGORIA 3

### SECRET

± 540 g/mq  
76% PVC - 2% PU - 22% PES  
76% PVC - 2% PU - 22% PES  
60.000 cicli martindale  
60.000 martindale cycles  
ignifugo classe 11M  
fire proof class 11M  
Impermeabile/resistente ai  
raggi UV/adatto per esterno/  
waterproof /UV rays resistant/  
suitable for outdoor

### MINI

± 340 g/mq  
100% poliestere Trevira CS  
100% Polyester Trevira CS  
100.000 cicli martindale  
100.000 martindale cycles  
ignifugo classe 11M  
fire proof class 11M

### ANGEL TRICK

± 350 g/mq  
100% PP FR (nativa) / 100% PP FR (native)  
50.000 cicli martindale / 50.000 martindale cycles  
ignifugo classe 11M  
fire proof class 11M  
idrorepellente, antistatico, anallergico, antibatterico,  
irrestingibile / water repellent, antistatic,  
hypoallergenic, antibacterial, no-shrink

## CATEGORIA 5

### PELLE - LEATHER

100% pelle smerigliata  
100% buffed leather

## RETE MESH

Composizione:

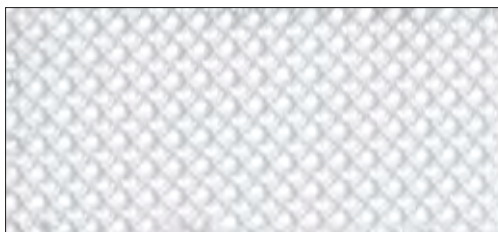
100% poliestere - martindale: 25.000 cicli

Composition:

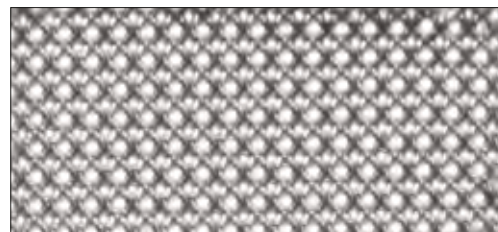
100% polyester - martindale: 25.000 cycles

Su richiesta: RETE NERA M10 disponibile  
in versione ignifuga (M10 FR)

Upon request: BLACK MESH M10 is also  
available with fire proof treatment (M10 FR)



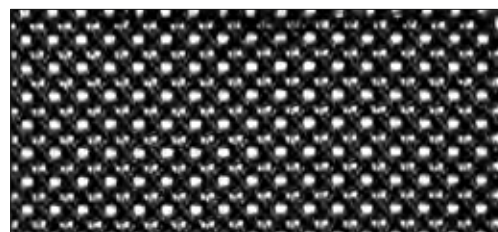
M 2



M 3



M 4



M 10

Disponibile solo per modello Synchronet  
Available for Synchronet model only

Composizione: 70% polivinile-30% PES  
martindale: 100.000 cicli

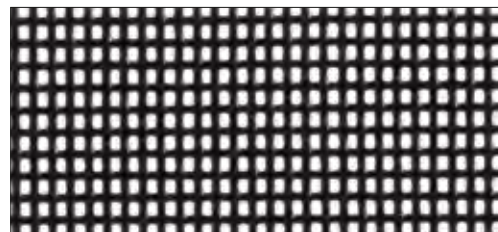
Composition:

70% polyvinyl-30%PES

martindale: 100.000 cycles



M 200



M 100